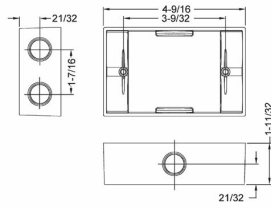




SINGLE GANG EXTENSIONS & ADAPTERS

1-1/2 in. Deep Extension Adapters with Lugs - Six Threaded Outlets - 5-1/4 in. x 3-1/2 in.
N/A

D05



Catalog #: 5405-0

APPLICATIONS

Used to provide additional capacity needed for NEC box fill requirements
Adapters allow installer to add "take-offs" to new boxes/devices

PRODUCT FEATURES

- State-of-the-art powder coat finish provides maximum weatherability and scratch resistance
- Closure plugs provided for two and six outlet styles
- Internal threads and hubs comply with NEMA requirements
- Hubs accept all threaded fittings and threaded conduit
- Multi-lingual instructions in each package
- Includes gasket and mounting hardware
- N/A

UL LISTED

File E195978

CSA

C22.2 No. 18

NEMA

3R Rated

GENERAL PRODUCT INFORMATION

Color: Gray

CONFIGURATION

Number Of Outlets: 6
Gangs: 1

PRODUCT MEASUREMENTS

Depth: 1-1/2 in.
Outlet Size: 3/4 in.
Cubic Inches (cm3): 11.0 (180.3)
Wt. Ea. (Lbs.): 0.575

PACKAGING

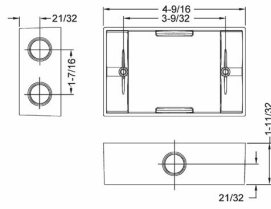
Package Type: Shrink
Std. Pkg.: 20
Product UPC-A Labeled: Yes
Ship Carton Length (in.): 16.19
Ship Carton Width (in.): 6.50
Ship Carton Height (in.): 8.50
Ctn Weight (Lbs.): 11.50
Pallet Qty: 1800.00
UPC Number: 050169540503
I2of5: 50050169540508



SINGLE GANG EXTENSIONS & ADAPTERS

1-1/2 in. Deep Extension Adapters with Lugs - Six Threaded Outlets - 5-1/4 in. x 3-1/2 in.
N/A

D05



Catalog #: 5405-0

APPLICATIONS

Used to provide additional capacity needed for NEC box fill requirements
Adapters allow installer to add "take-offs" to new boxes/devices

PRODUCT FEATURES

- State-of-the-art powder coat finish provides maximum weatherability and scratch resistance
- Closure plugs provided for two and six outlet styles
- Internal threads and hubs comply with NEMA requirements
- Hubs accept all threaded fittings and threaded conduit
- Multi-lingual instructions in each package
- Includes gasket and mounting hardware
- N/A

UL LISTED

File E195978

CSA

C22.2 No. 18

NEMA

3R Rated

GENERAL PRODUCT INFORMATION

Color: Gray

CONFIGURATION

Number Of Outlets: 6
Gangs: 1

PRODUCT MEASUREMENTS

Depth: 1-1/2 in.
Outlet Size: 3/4 in.
Cubic Inches (cm3): 11.0 (180.3)
Wt. Ea. (Lbs.): 0.575

PACKAGING

Package Type: Shrink
Std. Pkg.: 20
Product UPC-A Labeled: Yes
Ship Carton Length (in.): 16.19
Ship Carton Width (in.): 6.50
Ship Carton Height (in.): 8.50
Ctn Weight (Lbs.): 11.50
Pallet Qty: 1800.00
UPC Number: 050169540503
I2of5: 50050169540508