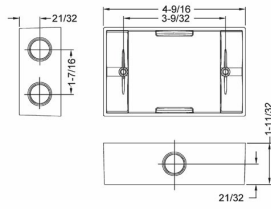




**SINGLE GANG EXTENSIONS & ADAPTERS**

1-1/2 in. Deep Extension Adapters with Lugs - Six Threaded Outlets - 5-1/4 in. x 3-1/2 in.  
N/A

D05



Catalog #: 5400-0

**APPLICATIONS**

Used to provide additional capacity needed for NEC box fill requirements  
Adapters allow installer to add "take-offs" to new boxes/devices

**PRODUCT FEATURES**

- State-of-the-art powder coat finish provides maximum weatherability and scratch resistance
- Closure plugs provided for two and six outlet styles
- Internal threads and hubs comply with NEMA requirements
- Hubs accept all threaded fittings and threaded conduit
- Multi-lingual instructions in each package
- Includes gasket and mounting hardware
- N/A

**UL LISTED**

File E195978

**CSA**

C22.2 No. 18

**NEMA**

3R Rated

**GENERAL PRODUCT INFORMATION**

Color: Gray

**CONFIGURATION**

Number Of Outlets: 6  
Gangs: 1

**PRODUCT MEASUREMENTS**

Depth: 1-1/2 in.  
Outlet Size: 1/2 in.  
Cubic Inches (cm3): 9.5 (155.7)  
Wt. Ea. (Lbs.): 0.575

**PACKAGING**

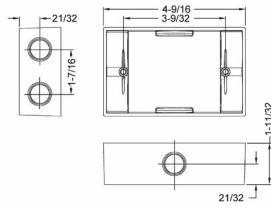
Package Type: Shrink  
Std. Pkg.: 20  
Product UPC-A Labeled: Yes  
Ship Carton Length (in.): 16.19  
Ship Carton Width (in.): 6.50  
Ship Carton Height (in.): 8.50  
Ctn Weight (Lbs.): 11.50  
Pallet Qty: 1800.00  
UPC Number: 050169540008  
I2of5: 50050169540003



**SINGLE GANG EXTENSIONS & ADAPTERS**

1-1/2 in. Deep Extension Adapters with Lugs - Six Threaded Outlets - 5-1/4 in. x 3-1/2 in.  
N/A

D05



Catalog #: 5400-0

**APPLICATIONS**

Used to provide additional capacity needed for NEC box fill requirements  
Adapters allow installer to add "take-offs" to new boxes/devices

**PRODUCT FEATURES**

- State-of-the-art powder coat finish provides maximum weatherability and scratch resistance
- Closure plugs provided for two and six outlet styles
- Internal threads and hubs comply with NEMA requirements
- Hubs accept all threaded fittings and threaded conduit
- Multi-lingual instructions in each package
- Includes gasket and mounting hardware
- N/A

**UL LISTED**

File E195978

**CSA**

C22.2 No. 18

**NEMA**

3R Rated

**GENERAL PRODUCT INFORMATION**

Color: Gray

**CONFIGURATION**

Number Of Outlets: 6  
Gangs: 1

**PRODUCT MEASUREMENTS**

Depth: 1-1/2 in.  
Outlet Size: 1/2 in.  
Cubic Inches (cm3): 9.5 (155.7)  
Wt. Ea. (Lbs.): 0.575

**PACKAGING**

Package Type: Shrink  
Std. Pkg.: 20  
Product UPC-A Labeled: Yes  
Ship Carton Length (in.): 16.19  
Ship Carton Width (in.): 6.50  
Ship Carton Height (in.): 8.50  
Ctn Weight (Lbs.): 11.50  
Pallet Qty: 1800.00  
UPC Number: 050169540008  
I2of5: 50050169540003