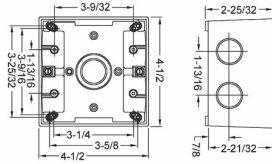




**TWO GANG BOXES - 2 IN. TO 2-5/8 IN. DEEP**

2-5/8 in. Deep with Lugs - Five Threaded Outlets - 4-1/2 in. x 4-1/2 in.  
N/A

D06



Catalog #: 5388-0

**APPLICATIONS**

For use in branch circuit wiring in wet, damp, or dry locations  
May be used as a weatherproof junction box, or as a housing for receptacles, switches, and GFCI's

**PRODUCT FEATURES**

- Reinforced connector outlets
- State-of-the-art powder coat finish provides maximum weatherability and scratch resistance
- Eight box mounting options with detachable lugs
- Two closure plugs included
- Hubs accept all threaded fittings and threaded conduit
- Ground screw installed
- Multi-lingual instructions in each package
- Includes gasket and mounting hardware
- N/A

**UL LISTED**

File E195978

**CSA**

C22.2 No. 18

**NEMA**

3R Rated

**GENERAL PRODUCT INFORMATION**

Color: Gray

**CONFIGURATION**

Number Of Outlets: 2  
Gangs: 2

**PRODUCT MEASUREMENTS**

Depth: 2-5/8 in.  
Outlet Size: 3/4 in.  
Cubic Inches (cm3): 36.0 (589.9)  
Wt. Ea. (Lbs.): 1.261

**PACKAGING**

Package Type: Shrink  
Std. Pkg.: 9  
Product UPC-A Labeled: Yes  
Weight (Lbs. Per/C): 126.10  
Ship Carton Length (in.): 16.19  
Ship Carton Width (in.): 6.50  
Ship Carton Height (in.): 8.50  
Ctn Weight (Lbs.): 11.35  
Pallet Qty: 810.00  
UPC Number: 050169538807  
I2of5: 50050169538802