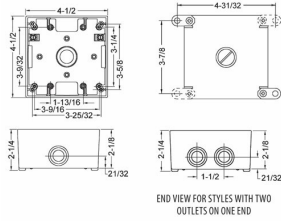




TWO GANG BOXES - 2 IN. TO 2-5/8 IN. DEEP

2 in. Deep with Lugs - Four Threaded Outlets - 4-1/2 in. x 4-1/2 in.
N/A

D06



Catalog #: 5343-0

APPLICATIONS

For use in branch circuit wiring in wet, damp, or dry locations
May be used as a weatherproof junction box, or as a housing for receptacles, switches, and GFCI's

PRODUCT FEATURES

- Reinforced connector outlets
- State-of-the-art powder coat finish provides maximum weatherability and scratch resistance
- Eight box mounting options with detachable lugs
- Two closure plugs included
- Hubs accept all threaded fittings and threaded conduit
- Ground screw installed
- Multi-lingual instructions in each package
- Includes gasket and mounting hardware
- N/A

UL LISTED

File E195978

CSA

C22.2 No. 18

NEMA

3R Rated

GENERAL PRODUCT INFORMATION

Color: Gray

CONFIGURATION

Number Of Outlets: 4
Gangs: 2

PRODUCT MEASUREMENTS

Depth: 2 in.
Outlet Size: 3/4 in.
Cubic Inches (cm³): 31.0 (508.0)
Wt. Ea. (Lbs.): 0.908

PACKAGING

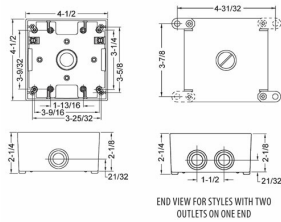
Package Type: Shrink
Std. Pkg.: 12
Product UPC-A Labeled: Yes
Weight (Lbs. Per/C): 90.80
Ship Carton Length (in.): 16.19
Ship Carton Width (in.): 6.50
Ship Carton Height (in.): 8.50
Ctn Weight (Lbs.): 10.90
Pallet Qty: 1080.00
UPC Number: 050169534304
I2of5: 50050169534309



TWO GANG BOXES - 2 IN. TO 2-5/8 IN. DEEP

2 in. Deep with Lugs - Four Threaded Outlets - 4-1/2 in. x 4-1/2 in.
N/A

D06



Catalog #: 5343-0

APPLICATIONS

For use in branch circuit wiring in wet, damp, or dry locations
May be used as a weatherproof junction box, or as a housing for receptacles, switches, and GFCI's

PRODUCT FEATURES

- Reinforced connector outlets
- State-of-the-art powder coat finish provides maximum weatherability and scratch resistance
- Eight box mounting options with detachable lugs
- Two closure plugs included
- Hubs accept all threaded fittings and threaded conduit
- Ground screw installed
- Multi-lingual instructions in each package
- Includes gasket and mounting hardware
- N/A

UL LISTED

File E195978

CSA

C22.2 No. 18

NEMA

3R Rated

GENERAL PRODUCT INFORMATION

Color: Gray

CONFIGURATION

Number Of Outlets: 4
Gangs: 2

PRODUCT MEASUREMENTS

Depth: 2 in.
Outlet Size: 3/4 in.
Cubic Inches (cm³): 31.0 (508.0)
Wt. Ea. (Lbs.): 0.908

PACKAGING

Package Type: Shrink
Std. Pkg.: 12
Product UPC-A Labeled: Yes
Weight (Lbs. Per/C): 90.80
Ship Carton Length (in.): 16.19
Ship Carton Width (in.): 6.50
Ship Carton Height (in.): 8.50
Ctn Weight (Lbs.): 10.90
Pallet Qty: 1080.00
UPC Number: 050169534304
I2of5: 50050169534309