

| | Cu. In. Volume | Catalog Number | Component Description | Exterior Dimensions | | | UPC# 85339 | Std. Pkg. Qty. | Std. Wt. (lb.) |
|------------------------------|----------------|----------------|--|---------------------|--------|-------|------------|----------------|----------------|
| | | | | D | W | H | | | |
| Nail-On | 94.0 | 5305-NK | Angled mid-nails, Speed Klamps™ - factory installed | 3-9/16 | 9-5/16 | 3-3/4 | 18001 | 6 | 9 |
| | 94.0 | 5305-NBK | Angled mid-nails, adjustable stabilizing bar, Speed Klamps™ - factory installed | 3-9/16 | 9-5/16 | 3-3/4 | 18002 | 6 | 10 |
| "Z" Hanger with Bar | 94.0 | 5305-Z4BK | 1/2" offset, "Z" hanger, adjustable stabilizing bar, Speed Klamps™ - factory installed | 3-9/16 | 9-5/16 | 3-3/4 | 18003 | 6 | 12 |
| | | | | | | | | | |
| Low Voltage Partition | | | | | | | | | |
| | | | | | | | | | |

All dimensions are in inches unless otherwise noted.
See page 7 for Attachment Coding suffix descriptions.

 Flush-Device Box
UL File No. E30594

Competitive Cross Reference

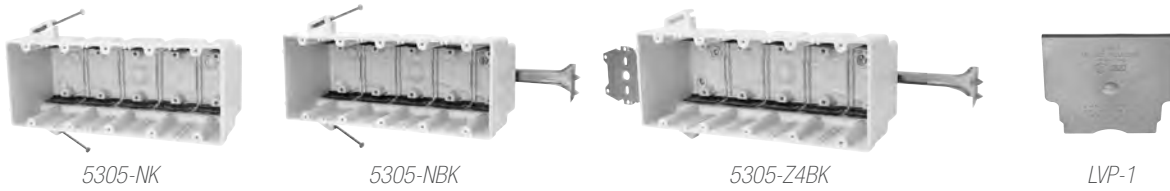
Fiberglass Outlet Boxes



ALLIED
MOULDED
PRODUCTS, Inc.

fiberglassBOX™: Premium Series “Hard Box” Fiberglass Boxes continued

| Allied Moulded | Carlton® PH (Union Phenolic) | Carlton® PC Black Polycarbonate | Carlton® PVC (Zip Blue) | Carlton® PVC (SuperBlue®) | Cantex® (EZ BOX®) | Pass & Seymour (Slater®) |
|----------------|---------------------------------|------------------------------------|----------------------------|------------------------------|----------------------|-----------------------------|
| 3300-Z4K | N/A | N/A | N/A | N/A | N/A | N/A |
| 3303-2Z4 | N/A | N/A | N/A | N/A | N/A | N/A |
| 3303-2Z4K | N/A | N/A | N/A | N/A | N/A | N/A |
| 3303-N | 1063/C | N/A | N/A | BH353A | N/A | S354RAC |
| 3303-NB | N/A | N/A | N/A | N/A | N/A | N/A |
| 3303-NBK | N/A | N/A | N/A | N/A | N/A | N/A |
| 3303-NK | 1063/C | N/A | N/A | BH353A | EZ74TN | S354RAC |
| 3303-SS | 1063-CS | N/A | N/A | BH353S | N/A | S354RACS |
| 3303-SSK | 1063-CS | N/A | N/A | BH353S | EZ74TNZ | S354RACS |
| 3303-Z4 | N/A | N/A | SB357 | N/A | N/A | S354S50AC |
| 3303-Z4K | N/A | N/A | SB357 | N/A | N/A | S354S50AC |
| 4300-2Z2 | 2004-238/2004-238-02 | 460-LB | N/A | N/A | N/A | S468S50AC |
| 4300-2Z2K | 2004-238/2004-238-02 | 460-LB | N/A | N/A | N/A | N/A |
| 4300-N | 2004 | N/A | B455A | BH464A | EZ55QNB | S468RAC |
| 4300-NB | 7074BH/2004BH | 460-SB | B455AH | N/A | EZ55QNB | N/A |
| 4300-NBK | 7074BH/2004BH | 460-SB | B455AH | N/A | EZ55QNB | N/A |
| 4300-NK | 2004 | N/A | B455A | BH464A | EZ55QNB | S468RAC |
| 4300-SS | N/A | N/A | N/A | BH464S | EZ55QNBZ | S468RACS |
| 4300-SSB | N/A | N/A | N/A | N/A | EZ55QNBZ | N/A |
| 4300-SSBK | N/A | N/A | N/A | N/A | EZ55QNBZ | N/A |
| 4300-SSK | N/A | N/A | N/A | BH464S | EZ55QNBZ | S468RACS |
| 4300-Z2 | N/A | N/A | N/A | N/A | N/A | N/A |
| 4300-Z2B | N/A | N/A | N/A | N/A | N/A | N/A |
| 4300-Z2BK | N/A | N/A | N/A | N/A | N/A | N/A |
| 4300-Z2K | N/A | N/A | N/A | N/A | N/A | N/A |
| 4300-Z4 | N/A | N/A | N/A | N/A | N/A | N/A |
| 4300-Z4K | N/A | N/A | N/A | N/A | N/A | N/A |
| 4304-2Z4 | N/A | N/A | N/A | N/A | N/A | N/A |
| 4304-2Z4K | N/A | N/A | N/A | N/A | N/A | N/A |
| 4304-N | N/A | N/A | N/A | BH464A | N/A | N/A |
| 4304-NB | N/A | N/A | N/A | N/A | N/A | N/A |
| 4304-NBK | N/A | N/A | N/A | N/A | N/A | N/A |
| 4304-NK | N/A | N/A | N/A | BH464A | N/A | N/A |
| 4304-Z4B | N/A | N/A | N/A | N/A | N/A | N/A |
| 4304-Z4BK | N/A | N/A | N/A | N/A | N/A | N/A |
| 5305-NBK | N/A | N/A | N/A | N/A | N/A | N/A |
| 5305-NK | N/A | N/A | N/A | N/A | N/A | N/A |
| 5305-Z4BK | N/A | N/A | N/A | N/A | N/A | N/A |
| 9301-E | 7060 | 108E | B108R | N/A | EZ08SF | N/A |
| 9303-H | 9050-702 | N/A | B108B | N/A | EZ08SB | N/A |
| 9304 | 3060 | N/A | N/A | N/A | N/A | N/A |
| 9304-G | N/A | N/A | N/A | N/A | N/A | N/A |
| 9305 | 3030 | N/A | N/A | N/A | N/A | N/A |
| 9305-G | N/A | N/A | N/A | N/A | N/A | N/A |
| 9305-GK | 3030-02-40 | N/A | N/A | N/A | N/A | N/A |
| 9305-K | 3030PC | N/A | N/A | N/A | N/A | N/A |
| 9305-S | 3030-902/3080-9 | N/A | N/A | BH614R | N/A | N/A |
| 9305-SG | 3020-9-40/3020-902-40 | N/A | N/A | BH614P | N/A | N/A |
| 9305-SGK | 3020-9-40/3020-902-40 | N/A | N/A | BH614P | N/A | N/A |
| 9305-SK | 3030-902/3080-9 | N/A | N/A | BH614R | N/A | N/A |



| | Cu. In. Volume | Catalog Number | Component Description | Exterior Dimensions | | | UPC# 85339 | Std. Pkg. Qty. | Std. Wt. (lb.) |
|------------------------------|----------------|----------------|--|---------------------|--------|-------|------------|----------------|----------------|
| | | | | D | W | H | | | |
| Nail-On | 94.0 | 5305-NK | Angled mid-nails, Speed Klamps™ - factory installed | 3-9/16 | 9-5/16 | 3-3/4 | 18001 | 6 | 9 |
| | 94.0 | 5305-NBK | Angled mid-nails, adjustable stabilizing bar, Speed Klamps™ - factory installed | 3-9/16 | 9-5/16 | 3-3/4 | 18002 | 6 | 10 |
| "Z" Hanger with Bar | 94.0 | 5305-Z4BK | 1/2" offset, "Z" hanger, adjustable stabilizing bar, Speed Klamps™ - factory installed | 3-9/16 | 9-5/16 | 3-3/4 | 18003 | 6 | 12 |
| | | | | | | | | | |
| Low Voltage Partition | | | | | | | | | |
| | | | | | | | | | |

All dimensions are in inches unless otherwise noted.
See page 7 for Attachment Coding suffix descriptions.

 Flush-Device Box
UL File No. E30594

Competitive Cross Reference

Fiberglass Outlet Boxes



ALLIED
MOULDED
PRODUCTS, Inc.

fiberglassBOX™: Premium Series “Hard Box” Fiberglass Boxes continued

| Allied Moulded | Carlton® PH (Union Phenolic) | Carlton® PC Black Polycarbonate | Carlton® PVC (Zip Blue) | Carlton® PVC (SuperBlue®) | Cantex® (EZ BOX®) | Pass & Seymour (Slater®) |
|----------------|---------------------------------|------------------------------------|----------------------------|------------------------------|----------------------|-----------------------------|
| 3300-Z4K | N/A | N/A | N/A | N/A | N/A | N/A |
| 3303-2Z4 | N/A | N/A | N/A | N/A | N/A | N/A |
| 3303-2Z4K | N/A | N/A | N/A | N/A | N/A | N/A |
| 3303-N | 1063/C | N/A | N/A | BH353A | N/A | S354RAC |
| 3303-NB | N/A | N/A | N/A | N/A | N/A | N/A |
| 3303-NBK | N/A | N/A | N/A | N/A | N/A | N/A |
| 3303-NK | 1063/C | N/A | N/A | BH353A | EZ74TN | S354RAC |
| 3303-SS | 1063-CS | N/A | N/A | BH353S | N/A | S354RACS |
| 3303-SSK | 1063-CS | N/A | N/A | BH353S | EZ74TNZ | S354RACS |
| 3303-Z4 | N/A | N/A | SB357 | N/A | N/A | S354S50AC |
| 3303-Z4K | N/A | N/A | SB357 | N/A | N/A | S354S50AC |
| 4300-2Z2 | 2004-238/2004-238-02 | 460-LB | N/A | N/A | N/A | S468S50AC |
| 4300-2Z2K | 2004-238/2004-238-02 | 460-LB | N/A | N/A | N/A | N/A |
| 4300-N | 2004 | N/A | B455A | BH464A | EZ55QNB | S468RAC |
| 4300-NB | 7074BH/2004BH | 460-SB | B455AH | N/A | EZ55QNB | N/A |
| 4300-NBK | 7074BH/2004BH | 460-SB | B455AH | N/A | EZ55QNB | N/A |
| 4300-NK | 2004 | N/A | B455A | BH464A | EZ55QNB | S468RAC |
| 4300-SS | N/A | N/A | N/A | BH464S | EZ55QNBZ | S468RACS |
| 4300-SSB | N/A | N/A | N/A | N/A | EZ55QNBZ | N/A |
| 4300-SSBK | N/A | N/A | N/A | N/A | EZ55QNBZ | N/A |
| 4300-SSK | N/A | N/A | N/A | BH464S | EZ55QNBZ | S468RACS |
| 4300-Z2 | N/A | N/A | N/A | N/A | N/A | N/A |
| 4300-Z2B | N/A | N/A | N/A | N/A | N/A | N/A |
| 4300-Z2BK | N/A | N/A | N/A | N/A | N/A | N/A |
| 4300-Z2K | N/A | N/A | N/A | N/A | N/A | N/A |
| 4300-Z4 | N/A | N/A | N/A | N/A | N/A | N/A |
| 4300-Z4K | N/A | N/A | N/A | N/A | N/A | N/A |
| 4304-2Z4 | N/A | N/A | N/A | N/A | N/A | N/A |
| 4304-2Z4K | N/A | N/A | N/A | N/A | N/A | N/A |
| 4304-N | N/A | N/A | N/A | BH464A | N/A | N/A |
| 4304-NB | N/A | N/A | N/A | N/A | N/A | N/A |
| 4304-NBK | N/A | N/A | N/A | N/A | N/A | N/A |
| 4304-NK | N/A | N/A | N/A | BH464A | N/A | N/A |
| 4304-Z4B | N/A | N/A | N/A | N/A | N/A | N/A |
| 4304-Z4BK | N/A | N/A | N/A | N/A | N/A | N/A |
| 5305-NBK | N/A | N/A | N/A | N/A | N/A | N/A |
| 5305-NK | N/A | N/A | N/A | N/A | N/A | N/A |
| 5305-Z4BK | N/A | N/A | N/A | N/A | N/A | N/A |
| 9301-E | 7060 | 108E | B108R | N/A | EZ08SF | N/A |
| 9303-H | 9050-702 | N/A | B108B | N/A | EZ08SB | N/A |
| 9304 | 3060 | N/A | N/A | N/A | N/A | N/A |
| 9304-G | N/A | N/A | N/A | N/A | N/A | N/A |
| 9305 | 3030 | N/A | N/A | N/A | N/A | N/A |
| 9305-G | N/A | N/A | N/A | N/A | N/A | N/A |
| 9305-GK | 3030-02-40 | N/A | N/A | N/A | N/A | N/A |
| 9305-K | 3030PC | N/A | N/A | N/A | N/A | N/A |
| 9305-S | 3030-902/3080-9 | N/A | N/A | BH614R | N/A | N/A |
| 9305-SG | 3020-9-40/3020-902-40 | N/A | N/A | BH614P | N/A | N/A |
| 9305-SGK | 3020-9-40/3020-902-40 | N/A | N/A | BH614P | N/A | N/A |
| 9305-SK | 3030-902/3080-9 | N/A | N/A | BH614R | N/A | N/A |