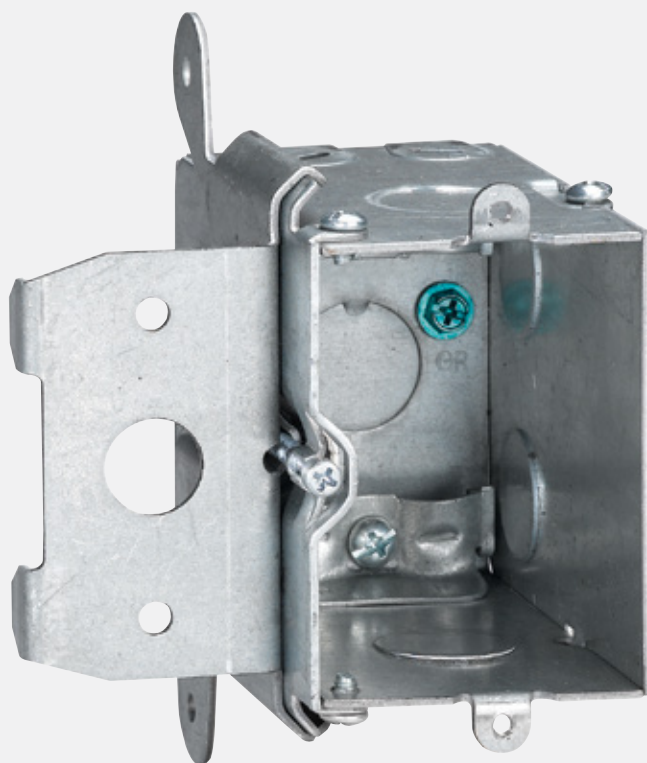

PRODUCT SHEET

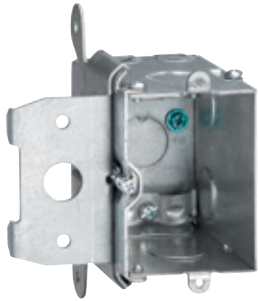
Steel City[®] Adjust-A-Box[®]

Easy depth adjustment after wall covering installation

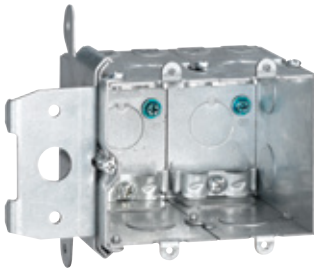


Steel City® Adjust-A-Box®

Easy depth adjustment after wall covering installation



01 MB120ADJ

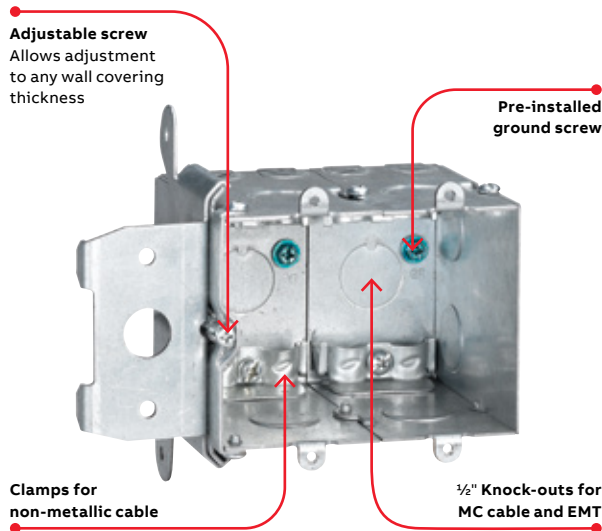


02 MB238ADJ

The Adjust-A-Box system adapts to a variety of wall coverings. Its patented design enables the installer to adjust the box to various depths with the turn of a screw.

Features

- Patented design allows for adjustment of depth after the wall covering has been installed
- Adjusts to any wall covering
- Mounts square and secure every time
- Removes easily to enable inner wall access
- Accommodates high- and low-voltage applications
- Pre-installed ground screw
- Accommodates non-metallic cable, flexible metal cable and EMT



Installation

Screw bracket to stud



Single gang



Two gang

Adjust box in or out to any wall thickness



Single gang



Two gang



Cat no.	Volume (cu. in.)	Description	Knockouts	Std. pkg. Size	Std. pkg. qty.	Std. pkg. wt. (lbs.)	UPC no.
MB120ADJ	20	One-gang adjustable wall box	½" (5)	2.20"W x 3.28"H x 3.52"D	18	19.25	034481-19343
MB238ADJ	38	Two-gang adjustable wall box	½" (8)	4.01"W x 3.28"H x 3.52"D	12	17.60	034481-19344

ABB Installation Products Inc.
Electrification Products Division
860 Ridge Lake Blvd.
Memphis, TN 38120

tnb.abb.com

We reserve the right to make technical changes or modify the contents of this document without prior notice. With regard to purchase orders, the agreed particulars shall prevail. ABB Inc. does not accept any responsibility whatsoever for potential errors or possible lack of information in this document.

We reserve all rights in this document and in the subject matter and illustrations contained therein. Any reproduction or utilization of its contents – in whole or in parts – is forbidden without prior written consent of ABB Inc.
Copyright© 2018 ABB
All rights reserved