

CABLE CUTTERS

RELIABLE | INNOVATIVE | DURABLE | EASY-TO-USE

IDEAL offers a wide variety of designs and styles of reliable cable cutters. We offer a complete professional line starting with a long armed cable cutter, to the patented BigFoot™ Ratcheting Cable Cutter, or the innovative PowerBlade™ series of cutters which fit into most standard drills; our designs are made so you can cut wire fast and easy.

The IDEAL focus on innovation is demonstrated by the PowerBlade™ line of Cable Cutters. Chucked into virtually any drill these robust cutters save time and money for utilities and commercial electricians. This cable cutter attaches to most cordless or corded drills (12V minimum).

THE ELECTRICIAN'S
CHAMPION™



PowerBlade™ Cable Cutter

Cuts copper up to 750 MCM
Cuts aluminum up to 1000 MCM



35-078

1-1/2"
MAX JAW
OPENING

- Extremely versatile and designed for multiple applications
- Jaw opening of 1-1/2 in.
- Cuts copper cable up to 750 MCM and aluminum cable up to 1000 MCM
- Specially hardened, rounded blades minimize cable distortion for professional quality every time



BIG KAHUNA™ Cable Cutter

Cuts copper and aluminum
up to 1250 MCM



35-076

3-1/2"
MAX JAW
OPENING

- Rock solid power blade designed for heavy-duty applications involving large diameter cable
- Up to 3-1/2 in. jaw opening. Cuts through most large-diameter cable.
- Leaves a clean, installation-ready cut each time, every time
- Superior blade durability, cuts copper and aluminum up to 1250 MCM



MERLIN ACSR Cutter

Cuts ACSR cable up to
3/4 in.



35-077

3/4"
MAX JAW
OPENING

- Especially designed for applications involving stainless steel reinforced aluminum cable
- Jaw opening of 3/4 in. for precision and accuracy
- Cuts up to 3/4 in. Merlin ACSR



BigFoot™ Ratcheting Cable Cutter

- Cuts 750 MCM and small hard-drawn copper and aluminum cables
- Hardened steel blades ensure consistent cuts and long-term durability
- Rounded blade design minimizes cable distortion during cutting
- Quick release mechanism simplifies blade back-out
- Locking mechanism keeps handles closed for easy storage
- Molded-in foot provides stability and leverage when making multiple cuts
- Not for cutting steel or ACSR



35-053

Ratcheting Cable Cutter

- Cuts hard drawn copper up to 400 MCM and soft copper, aluminum and multiple conductor cable up to 600 MCM
- Hardened steel blades ensure consistent cuts and long-term durability
- Rounded blade design minimizes cable distortion during cutting
- Quick release mechanism simplifies blade back-out
- Locking mechanism keeps handles closed for easy storage
- Not for cutting steel or ACSR



35-056

SirNickless™ Cutter

- Handles all common BX, MCAP®, MC and Flex cables
- Blade cuts armor without damage to internal conductors
- Splices cleanly through casings with only a few turns
- Handle knob stores up to six replacement blades
- Cutter comes with one blade installed, extra blades available to order (35-781 - 5/pack, 35-781-1 - 1/pack)



35-782

MCAP® is a registered trademark of Southwire Company.

Cable Cutters

**35-3052
Cable Cutter w/Smart-Grip™
Handles**



**35-052
Cable Cutter w/
Dipped-Grip
Handles**



- Drop-forged, high-carbon steel construction
- Precision-ground, hardened cutting edges provide accurate cuts with minimal cable distortion
- Cuts 2/0 copper and 4/- aluminum (not for use on ACSR)

Long-Arm Cable Cutters



**35-031
250 MCM**

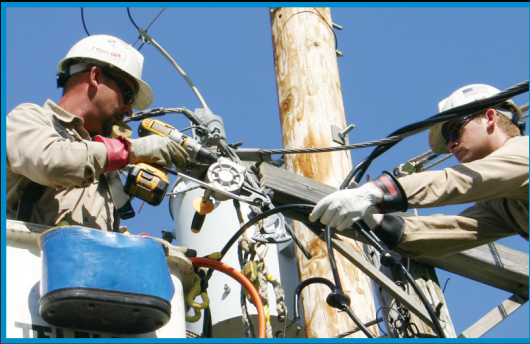


**35-032
500 MCM**



**35-033
1000 MCM**

- For copper and aluminum only, not for ACSR
- High strength forged blades for ultimate durability
- Precision-ground jaws make clean cuts with minimal cable distortion
- Replaceable blades



FASTER, TOUGHER, AND MORE DURABLE.
STAY A CUT ABOVE.



IDEAL INDUSTRIES, INC.

IDEAL INDUSTRIES, INC.
1800 S. Prairie Drive, Sycamore, IL 60178, USA / 815-895-5181 • 800-435-0705 in USA

International offices:
Australia • Brazil • Canada • China • France • Germany • India • Mexico • UK

For complete sales office contact information, visit us at:
www.idealind.com

Form No. P-2522
©2018 IDEAL INDUSTRIES, INC.

1/18
Printed in U.S.A.

CABLE CUTTERS

RELIABLE | INNOVATIVE | DURABLE | EASY-TO-USE

IDEAL offers a wide variety of designs and styles of reliable cable cutters. We offer a complete professional line starting with a long armed cable cutter, to the patented BigFoot™ Ratcheting Cable Cutter, or the innovative PowerBlade™ series of cutters which fit into most standard drills; our designs are made so you can cut wire fast and easy.

The IDEAL focus on innovation is demonstrated by the PowerBlade™ line of Cable Cutters. Chucked into virtually any drill these robust cutters save time and money for utilities and commercial electricians. This cable cutter attaches to most cordless or corded drills (12V minimum).

THE ELECTRICIAN'S
CHAMPION™



PowerBlade™ Cable Cutter

Cuts copper up to 750 MCM
Cuts aluminum up to 1000 MCM



35-078

1-1/2"
MAX JAW
OPENING

- Extremely versatile and designed for multiple applications
- Jaw opening of 1-1/2 in.
- Cuts copper cable up to 750 MCM and aluminum cable up to 1000 MCM
- Specially hardened, rounded blades minimize cable distortion for professional quality every time



BIG KAHUNA™ Cable Cutter

Cuts copper and aluminum
up to 1250 MCM



35-076

3-1/2"
MAX JAW
OPENING

- Rock solid power blade designed for heavy-duty applications involving large diameter cable
- Up to 3-1/2 in. jaw opening. Cuts through most large-diameter cable.
- Leaves a clean, installation-ready cut each time, every time
- Superior blade durability, cuts copper and aluminum up to 1250 MCM



MERLIN ACSR Cutter

Cuts ACSR cable up to
3/4 in.



35-077

3/4"
MAX JAW
OPENING

- Especially designed for applications involving stainless steel reinforced aluminum cable
- Jaw opening of 3/4 in. for precision and accuracy
- Cuts up to 3/4 in. Merlin ACSR



BigFoot™ Ratcheting Cable Cutter

- Cuts 750 MCM and small hard-drawn copper and aluminum cables
- Hardened steel blades ensure consistent cuts and long-term durability
- Rounded blade design minimizes cable distortion during cutting
- Quick release mechanism simplifies blade back-out
- Locking mechanism keeps handles closed for easy storage
- Molded-in foot provides stability and leverage when making multiple cuts
- Not for cutting steel or ACSR



35-053

Ratcheting Cable Cutter

- Cuts hard drawn copper up to 400 MCM and soft copper, aluminum and multiple conductor cable up to 600 MCM
- Hardened steel blades ensure consistent cuts and long-term durability
- Rounded blade design minimizes cable distortion during cutting
- Quick release mechanism simplifies blade back-out
- Locking mechanism keeps handles closed for easy storage
- Not for cutting steel or ACSR



35-056

SirNickless™ Cutter

- Handles all common BX, MCAP®, MC and Flex cables
- Blade cuts armor without damage to internal conductors
- Splices cleanly through casings with only a few turns
- Handle knob stores up to six replacement blades
- Cutter comes with one blade installed, extra blades available to order (35-781 - 5/pack, 35-781-1 - 1/pack)



35-782

MCAP® is a registered trademark of Southwire Company.

Cable Cutters

**35-3052
Cable Cutter w/Smart-Grip™
Handles**



**35-052
Cable Cutter w/
Dipped-Grip
Handles**



- Drop-forged, high-carbon steel construction
- Precision-ground, hardened cutting edges provide accurate cuts with minimal cable distortion
- Cuts 2/0 copper and 4/- aluminum (not for use on ACSR)

Long-Arm Cable Cutters



**35-031
250 MCM**

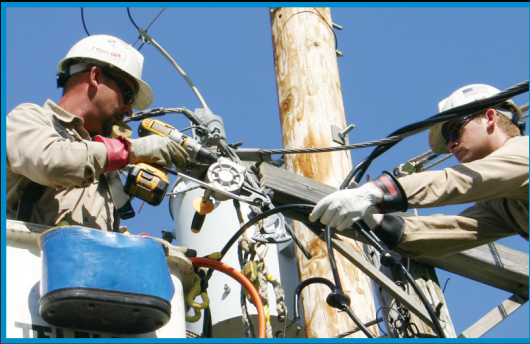


**35-032
500 MCM**



**35-033
1000 MCM**

- For copper and aluminum only, not for ACSR
- High strength forged blades for ultimate durability
- Precision-ground jaws make clean cuts with minimal cable distortion
- Replaceable blades



FASTER, TOUGHER, AND MORE DURABLE.
STAY A CUT ABOVE.



IDEAL INDUSTRIES, INC.

IDEAL INDUSTRIES, INC.
1800 S. Prairie Drive, Sycamore, IL 60178, USA / 815-895-5181 • 800-435-0705 in USA

International offices:
Australia • Brazil • Canada • China • France • Germany • India • Mexico • UK

For complete sales office contact information, visit us at:
www.idealind.com

Form No. P-2522
©2018 IDEAL INDUSTRIES, INC.

1/18
Printed in U.S.A.