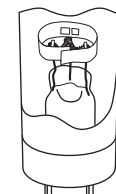
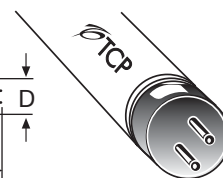
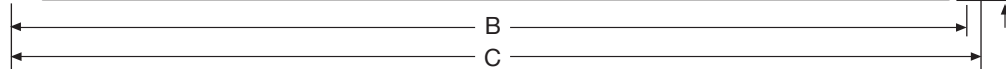


**TCP Item Number: 31054841**

Lamp code: F54T5HO/841



Cathode Guarded

Average Rated Life (hours)		
3 hours per start -----	24,000	
TCLP Compliant -----	Yes	
Low Mercury -----	Yes	

### Physical Characteristics

Lamp type -----	T5
Base type -----	Miniature Bipin
Lamp Material -----	Soda Lime
Phosphor -----	Tri-Phosphor
Lamp Diameter (inches)	
Nominal (D) -----	.625
Maximum (D) -----	.670
Overall Length (inches)	
Nominal (C) -----	45.2
Maximum (C) -----	45.8
Face to End of opposing pin (inches)	
Maximum (B) -----	45.52
Minimum (B) -----	45.42

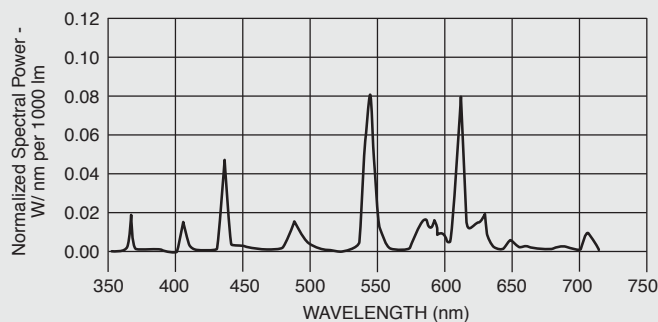
### Photometric Characteristics

Initial Lumens -----	5000
Mean Lumens (40% of rated life) -----	4750
Correlated Color Temperature (Kelvin) -----	3500
Color Rendering Index (CRI) -----	85
Normal Efficacy (Lumens/Watts) -----	92.6

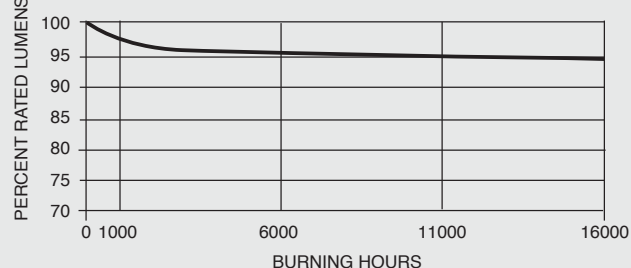
### Electrical Characteristics

Lamp Watts -----	54
Nominal Lamp Volts -----	118
Nominal Lamp Operating Frequency (Hz) --	50-60 Hz
Min. Starting Temperature (°C) -----	-20
Min. Starting Lamp Voltage at 10°C -----	520
Min. Cathode Resistance (Rh/Rc) -----	4.25
Max. Cathode Resistance (Rh/Rc) -----	6.5

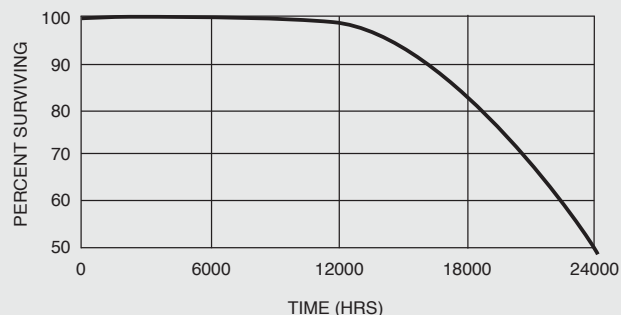
### Spectral Power Distribution



### Lamp Lumen Maintenance



### Typical Lamp Mortality



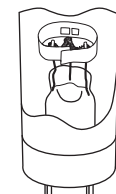
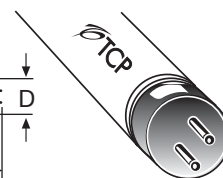
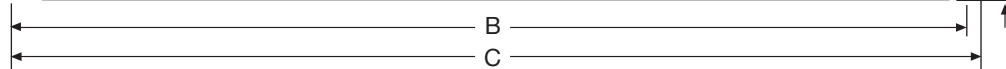
**24 MONTH STANDARD WARRANTY**

For the most up-to-date specs, please visit [www.tcp.com](http://www.tcp.com)

\*Testing performed with Instant Start Ballast.

**TCP Item Number: 31054841**

Lamp code: F54T5HO/841



Cathode Guarded

Average Rated Life (hours)		
3 hours per start -----	24,000	
TCLP Compliant -----	Yes	
Low Mercury -----	Yes	

### Physical Characteristics

Lamp type -----	T5
Base type -----	Miniature Bipin
Lamp Material -----	Soda Lime
Phosphor -----	Tri-Phosphor
Lamp Diameter (inches)	
Nominal (D) -----	.625
Maximum (D) -----	.670
Overall Length (inches)	
Nominal (C) -----	45.2
Maximum (C) -----	45.8
Face to End of opposing pin (inches)	
Maximum (B) -----	45.52
Minimum (B) -----	45.42

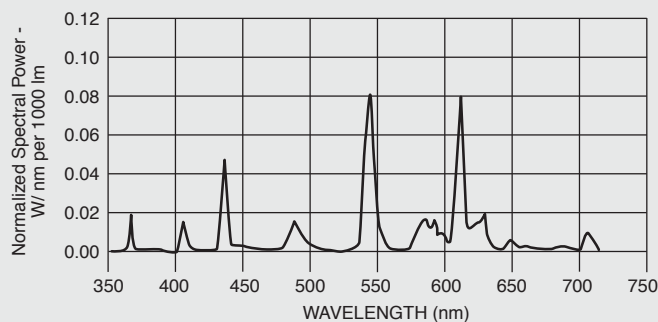
### Photometric Characteristics

Initial Lumens -----	5000
Mean Lumens (40% of rated life) -----	4750
Correlated Color Temperature (Kelvin) -----	3500
Color Rendering Index (CRI) -----	85
Normal Efficacy (Lumens/Watts) -----	92.6

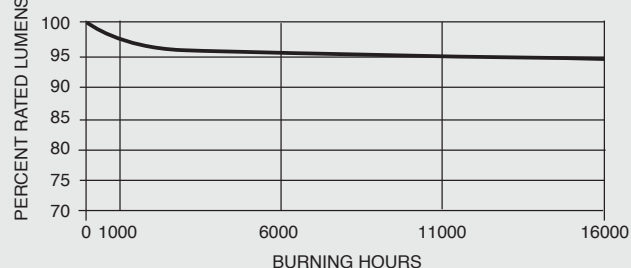
### Electrical Characteristics

Lamp Watts -----	54
Nominal Lamp Volts -----	118
Nominal Lamp Operating Frequency (Hz) --	50-60 Hz
Min. Starting Temperature (°C) -----	-20
Min. Starting Lamp Voltage at 10°C -----	520
Min. Cathode Resistance (Rh/Rc) -----	4.25
Max. Cathode Resistance (Rh/Rc) -----	6.5

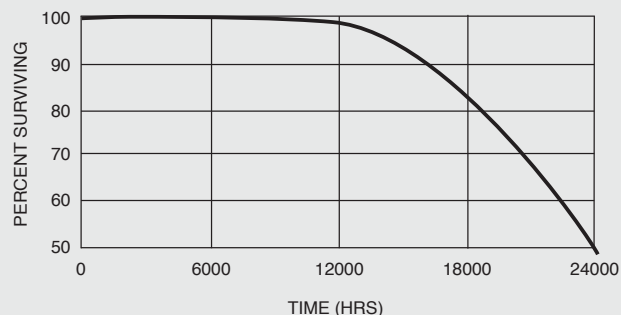
### Spectral Power Distribution



### Lamp Lumen Maintenance



### Typical Lamp Mortality



**24 MONTH** STANDARD WARRANTY

For the most up-to-date specs, please visit [www.tcp.com](http://www.tcp.com)

\*Testing performed with Instant Start Ballast.