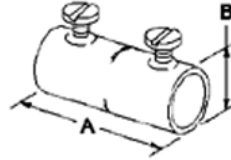
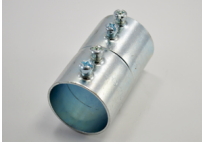


Couplings - Steel

Images



Application

Used to join two lengths of EMT. Concrete tight when taped.

Product Information

Material: Steel

Finish: Zinc electro-plate

Certifications & Codes:

Federal Specification Number: A-A-50553

NEMA Standard: FB-1

UL File Number: E24001

UL Standard: UL-514B

UNSPSC: 39131707

[Download Photo Image](#) [Download Dimensional Image](#)
Dimension A in Inches: 3-1/4
Dimension B in Inches: 1-11/16

Catalog ID: 243

UPC Number: 781747002433

Description: Coupling, Set Screw, Steel, Size 1 1/4 Inch

Application: Used to join two lengths of EMT. Concrete tight when taped.

Trade Size: 1-1/4"

Std Pkg Qty: 90

Unit Qty: 15