

fiberglass BOX™ Two Gang

Residential Switch or Receptacle Box



9372-NMHK



2300-NC2



2300-NK



2302-NC4



2302-NK




2300-SSK



2302-SSK

Nail-On

Cu. In. Volume	Catalog Number	Component Description	Exterior Dimensions			UPC# 85339	Std. Pkg. Qty.	Std. Wt. (lb.)
			D	W	H			
30.0	9372-NMHK	 Angled mid-nails, 3/16" panel stops, Speed Klamps™ - factory installed	2-3/4	4	3-3/4	10683	48	26
32.5	2300-N	Angled mid-nails, Speed Klamps™ - bulk packed	3	4	3-3/4	12125	48	28
32.5	2300-NC2	Angled mid-nails, 2 wire clamps - factory installed	3	4	3-3/4	12135	48	29
32.5	2300-NC4	Angled mid-nails, 4 wire clamps - factory installed	3	4	3-3/4	12145	48	31
32.5	2300-NK	Angled mid-nails, Speed Klamps™ - factory installed	3	4	3-3/4	12127	48	28
37.0	2302-N	Angled mid-nails, Speed Klamps™ - bulk packed	3-7/16	4	3-3/4	13060	48	30
37.0	2302-NC2	Angled mid-nails, 2 wire clamps - factory installed	3-7/16	4	3-3/4	13065	48	31
37.0	2302-NC4	Angled mid-nails, 4 wire clamps - factory installed	3-7/16	4	3-3/4	13070	48	33
37.0	2302-NK	Angled mid-nails, Speed Klamps™ - factory installed	3-7/16	4	3-3/4	13075	48	30
37.0	2302-NKRED	Angled mid-nails, Speed Klamps™ - factory installed, molded in red for fire circuits	3-7/16	4	3-3/4	96501	12	8

Steel Stud Screws

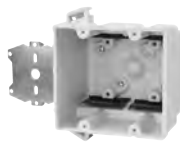
Cu. In. Volume	Catalog Number	Component Description	Exterior Dimensions			UPC# 85339	Std. Pkg. Qty.	Std. Wt. (lb.)
			D	W	H			
32.5	2300-SS	Steel stud screws for use with non-load-bearing studs 22 gauge or lighter, Speed Klamps™ - bulk packed	3	4	3-3/4	12202	50	29
32.5	2300-SSK	Steel stud screws for use with non-load-bearing studs 22 gauge or lighter, Speed Klamps™ - factory installed	3	4	3-3/4	12203	50	29
37.0	2302-SS	Steel stud screws for use with non-load-bearing studs 22 gauge or lighter, Speed Klamps™ - bulk packed	3-7/16	4	3-3/4	13080	50	29
37.0	2302-SSK	Steel stud screws for use with non-load-bearing studs 22 gauge or lighter, Speed Klamps™ - factory installed	3-7/16	4	3-3/4	13081	50	30



2300-Z2ZK



2300-Z2K



2300-Z4K




2302-Z4K

"Z" Hanger

Cu. In. Volume	Catalog Number	Component Description	Exterior Dimensions			UPC# 85339	Std. Pkg. Qty.	Std. Wt. (lb.)
			D	W	H			
32.5	2300-Z22	1/4" offset, "Z" hanger each side of box, Speed Klamps™ - bulk packed	3	4	3-3/4	12500	12	13
32.5	2300-Z2ZK	1/4" offset, "Z" hanger each side of box, Speed Klamps™ - factory installed	3	4	3-3/4	12501	12	13
32.5	2300-Z2	1/4" offset, "Z" hanger, Speed Klamps™ - bulk packed	3	4	3-3/4	12400	50	39
32.5	2300-Z2K	1/4" offset, "Z" hanger, Speed Klamps™ - factory installed	3	4	3-3/4	12401	50	39
32.5	2300-Z4	1/2" offset, "Z" hanger, Speed Klamps™ - bulk packed	3	4	3-3/4	12700	50	38
32.5	2300-Z4K	1/2" offset, "Z" hanger, Speed Klamps™ - factory installed	3	4	3-3/4	12701	50	39
37.0	2302-Z4	1/2" offset, "Z" hanger, Speed Klamps™ - bulk packed	3-7/16	4	3-3/4	13082	50	40
37.0	2302-Z4K	1/2" offset, "Z" hanger, Speed Klamps™ - factory installed	3-7/16	4	3-3/4	13083	50	42

All dimensions are in inches unless otherwise noted.
See page 7 for Attachment Coding suffix descriptions.

 Old Work/Manufactured Housing Boxes

 Flush-Device Box
UL File No. E30594

Competitive Cross Reference

Fiberglass Outlet Boxes



ALLIED
MOULDED
PRODUCTS, Inc.


fiberglassBOX™: Premium Series “Hard Box” Fiberglass Boxes

Allied Moulded	Carlton® PH (Union Phenolic)	Carlton® PC Black Polycarbonate	Carlton® PVC (Zip Blue)	Carlton® PVC (SuperBlue®)	Cantex® (EZ BOX®)	Pass & Seymour (Slater®)
1096-N	1040/2000/1240	118-N	B118A	N/A	EZ18SN	P118R
1096-NR	N/A	N/A	N1-710-M	N/A	N/A	P118RN
1096-SS	N/A	N/A	N/A	N/A	EZ18SNZ	S118RS
1096-Z2	N/A	118-LB	N/A	N/A	N/A	S118S25
1096-Z4	2000-738	118-LB	B118B	N/A	N/A	S118S50
1098-N	1250/1050	120-N	B120A	N/A	EZ20SN/EZ20SB	N/A
1098-NR	N/A	N/A	N/A	N/A	N/A	N/A
1098-SS	1250-S	N/A	N/A	N/A	EZ20SNZ	N/A
1098-Z2	N/A	N/A	N/A	N/A	N/A	N/A
1098-Z4	1250-112	N/A	N/A	N/A	N/A	N/A
1098-Z4H	N/A	N/A	N/A	N/A	N/A	PH1-22-B
1099-N	1260	122-N	RN-23	BH122A	EZ23SN	P122R
1099-NR	N/A	N/A	N/A	N/A	N/A	P122RN
1099-NRED	N/A	N/A	N/A	N/A	EZ20SNAR	N/A
1099-SS	1260-S	N/A	RS-23	BH122S	EZ23SNZ	S122RS
1099-Z4	N/A	N/A	N/A	N/A	EZ20SB	S122S50/P122C
2300-Z22	N/A	234-LB	SB2-236-FS	N/A	N/A	S235S50AC
2300-Z22K	N/A	234-LB	SB2-236-FS	N/A	N/A	S235S50AC
2300-N	1052	234-N	B232A/SN234/SN236	BH235A	EZ32DN	S235RAC
2300-NK	1052	234-N	B232A/SN234	BH235A	EZ32DN	S235RAC
2300-SS	1052CS	N/A	N/A	BH235S	EZ32DNZ	N/A
2300-SSK	1052CS	N/A	N/A	BH235S	EZ32DNZ	N/A
2300-Z2	2002-738	N/A	B232B	N/A	N/A	N/A
2300-Z2K	2002-738	N/A	B232B	N/A	N/A	N/A
2300-Z4	N/A	N/A	N/A	N/A	N/A	N/A
2300-Z4K	N/A	N/A	N/A	N/A	N/A	N/A
2302-N	1072-C	N/A	SN236/SN241	BH235A	EZ48DN	N/A
2302-NK	1072-C	N/A	SN236/SN241	BH235A	EZ48DN	N/A
2302-NKRED	N/A	N/A	N/A	N/A	N/A	N/A
2302-SS	N/A	N/A	SS241	BH235S	EZ48DNZ	5235RACS
2302-SSK	N/A	N/A	SS241	BH235S	EZ48DNZ	5235RACS
2302-Z4	N/A	N/A	N/A	N/A	N/A	N/A
2302-Z4K	N/A	N/A	N/A	N/A	N/A	N/A
3300-Z22	N/A	345-LB	SB2-357-FS	N/A	N/A	S354S50AC
3300-Z22K	N/A	345-LB	SB2-357-FS	N/A	N/A	S354S50AC
3300-Z24	N/A	N/A	N/A	N/A	N/A	N/A
3300-Z24K	N/A	N/A	N/A	N/A	N/A	N/A
3300-N	1043-C	345-N	B344A/SN357	BH353A	EZ44TN	N/A
3300-NB	N/A	N/A	N/A	N/A	N/A	N/A
3300-NBK	N/A	N/A	N/A	N/A	N/A	N/A
3300-NK	1043-C	345-N	B344A/SN357	BH353A	EZ44TN	N/A
3300-SS	N/A	N/A	SS357	BH353S	EZ44TNZ	N/A
3300-SSB	N/A	N/A	N/A	N/A	N/A	N/A
3300-SSBK	N/A	N/A	N/A	N/A	N/A	N/A
3300-SSK	N/A	N/A	SS357	BH353S	EZ44TNZ	N/A
3300-Z2	N/A	N/A	SB357	N/A	N/A	N/A
3300-Z2B	N/A	N/A	N/A	N/A	N/A	N/A
3300-Z2BK	N/A	N/A	N/A	N/A	N/A	N/A
3300-Z2K	N/A	N/A	SB357	N/A	N/A	N/A
3300-Z4	N/A	N/A	N/A	N/A	N/A	N/A

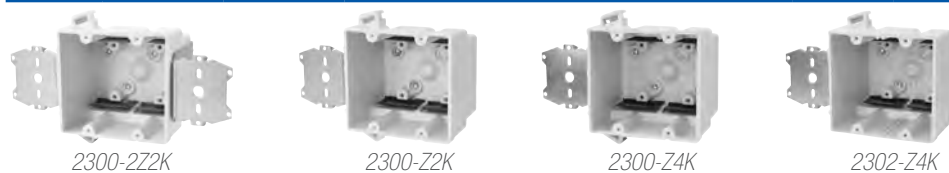
fiberglass BOX™ Two Gang

Residential Switch or Receptacle Box



	Cu. In. Volume	Catalog Number	Component Description	Exterior Dimensions			UPC# 85339	Std. Pkg. Qty.	Std. Wt. (lb.)
				D	W	H			
Nail-On	30.0	9372-NMHK	 Angled mid-nails, 3/16" panel stops, Speed Klamps™ - factory installed	2-3/4	4	3-3/4	10683	48	26
	32.5	2300-N	Angled mid-nails, Speed Klamps™ - bulk packed	3	4	3-3/4	12125	48	28
	32.5	2300-NC2	Angled mid-nails, 2 wire clamps - factory installed	3	4	3-3/4	12135	48	29
	32.5	2300-NC4	Angled mid-nails, 4 wire clamps - factory installed	3	4	3-3/4	12145	48	31
	32.5	2300-NK	Angled mid-nails, Speed Klamps™ - factory installed	3	4	3-3/4	12127	48	28
	37.0	2302-N	Angled mid-nails, Speed Klamps™ - bulk packed	3-7/16	4	3-3/4	13060	48	30
	37.0	2302-NC2	Angled mid-nails, 2 wire clamps - factory installed	3-7/16	4	3-3/4	13065	48	31
	37.0	2302-NC4	Angled mid-nails, 4 wire clamps - factory installed	3-7/16	4	3-3/4	13070	48	33
	37.0	2302-NK	Angled mid-nails, Speed Klamps™ - factory installed	3-7/16	4	3-3/4	13075	48	30
	37.0	2302-NKRED	Angled mid-nails, Speed Klamps™ - factory installed, molded in red for fire circuits	3-7/16	4	3-3/4	96501	12	8

	Cu. In. Volume	Catalog Number	Component Description	Exterior Dimensions			UPC# 85339	Std. Pkg. Qty.	Std. Wt. (lb.)
				D	W	H			
Steel Stud Screws	32.5	2300-SS	Steel stud screws for use with non-load-bearing studs 22 gauge or lighter, Speed Klamps™ - bulk packed	3	4	3-3/4	12202	50	29
	32.5	2300-SSK	Steel stud screws for use with non-load-bearing studs 22 gauge or lighter, Speed Klamps™ - factory installed	3	4	3-3/4	12203	50	29
	37.0	2302-SS	Steel stud screws for use with non-load-bearing studs 22 gauge or lighter, Speed Klamps™ - bulk packed	3-7/16	4	3-3/4	13080	50	29
	37.0	2302-SSK	Steel stud screws for use with non-load-bearing studs 22 gauge or lighter, Speed Klamps™ - factory installed	3-7/16	4	3-3/4	13081	50	30



	Cu. In. Volume	Catalog Number	Component Description	Exterior Dimensions			UPC# 85339	Std. Pkg. Qty.	Std. Wt. (lb.)
				D	W	H			
"Z" Hanger	32.5	2300-Z22	1/4" offset, "Z" hanger each side of box, Speed Klamps™ - bulk packed	3	4	3-3/4	12500	12	13
	32.5	2300-Z22K	1/4" offset, "Z" hanger each side of box, Speed Klamps™ - factory installed	3	4	3-3/4	12501	12	13
	32.5	2300-Z2	1/4" offset, "Z" hanger, Speed Klamps™ - bulk packed	3	4	3-3/4	12400	50	39
	32.5	2300-Z2K	1/4" offset, "Z" hanger, Speed Klamps™ - factory installed	3	4	3-3/4	12401	50	39
	32.5	2300-Z4	1/2" offset, "Z" hanger, Speed Klamps™ - bulk packed	3	4	3-3/4	12700	50	38
	32.5	2300-Z4K	1/2" offset, "Z" hanger, Speed Klamps™ - factory installed	3	4	3-3/4	12701	50	39
	37.0	2302-Z4	1/2" offset, "Z" hanger, Speed Klamps™ - bulk packed	3-7/16	4	3-3/4	13082	50	40
	37.0	2302-Z4K	1/2" offset, "Z" hanger, Speed Klamps™ - factory installed	3-7/16	4	3-3/4	13083	50	42

All dimensions are in inches unless otherwise noted.
See page 7 for Attachment Coding suffix descriptions.

 Old Work/Manufactured Housing Boxes

 Flush-Device Box
UL File No. E30594

Competitive Cross Reference

Fiberglass Outlet Boxes



ALLIED
MOULDED
PRODUCTS, Inc.

fiberglassBOX™: Premium Series “Hard Box” Fiberglass Boxes

Allied Moulded	Carlton® PH (Union Phenolic)	Carlton® PC Black Polycarbonate	Carlton® PVC (Zip Blue)	Carlton® PVC (SuperBlue®)	Cantex® (EZ BOX®)	Pass & Seymour (Slater®)
1096-N	1040/2000/1240	118-N	B118A	N/A	EZ18SN	P118R
1096-NR	N/A	N/A	N1-710-M	N/A	N/A	P118RN
1096-SS	N/A	N/A	N/A	N/A	EZ18SNZ	S118RS
1096-Z2	N/A	118-LB	N/A	N/A	N/A	S118S25
1096-Z4	2000-738	118-LB	B118B	N/A	N/A	S118S50
1098-N	1250/1050	120-N	B120A	N/A	EZ20SN/EZ20SB	N/A
1098-NR	N/A	N/A	N/A	N/A	N/A	N/A
1098-SS	1250-S	N/A	N/A	N/A	EZ20SNZ	N/A
1098-Z2	N/A	N/A	N/A	N/A	N/A	N/A
1098-Z4	1250-112	N/A	N/A	N/A	N/A	N/A
1098-Z4H	N/A	N/A	N/A	N/A	N/A	PH1-22-B
1099-N	1260	122-N	RN-23	BH122A	EZ23SN	P122R
1099-NR	N/A	N/A	N/A	N/A	N/A	P122RN
1099-NRED	N/A	N/A	N/A	N/A	EZ20SNAR	N/A
1099-SS	1260-S	N/A	RS-23	BH122S	EZ23SNZ	S122RS
1099-Z4	N/A	N/A	N/A	N/A	EZ20SB	S122S50/P122C
2300-Z22	N/A	234-LB	SB2-236-FS	N/A	N/A	S235S50AC
2300-Z22K	N/A	234-LB	SB2-236-FS	N/A	N/A	S235S50AC
2300-N	1052	234-N	B232A/SN234/SN236	BH235A	EZ32DN	S235RAC
2300-NK	1052	234-N	B232A/SN234	BH235A	EZ32DN	S235RAC
2300-SS	1052CS	N/A	N/A	BH235S	EZ32DNZ	N/A
2300-SSK	1052CS	N/A	N/A	BH235S	EZ32DNZ	N/A
2300-Z2	2002-738	N/A	B232B	N/A	N/A	N/A
2300-Z2K	2002-738	N/A	B232B	N/A	N/A	N/A
2300-Z4	N/A	N/A	N/A	N/A	N/A	N/A
2300-Z4K	N/A	N/A	N/A	N/A	N/A	N/A
2302-N	1072-C	N/A	SN236/SN241	BH235A	EZ48DN	N/A
2302-NK	1072-C	N/A	SN236/SN241	BH235A	EZ48DN	N/A
2302-NKRED	N/A	N/A	N/A	N/A	N/A	N/A
2302-SS	N/A	N/A	SS241	BH235S	EZ48DNZ	5235RACS
2302-SSK	N/A	N/A	SS241	BH235S	EZ48DNZ	5235RACS
2302-Z4	N/A	N/A	N/A	N/A	N/A	N/A
2302-Z4K	N/A	N/A	N/A	N/A	N/A	N/A
3300-Z22	N/A	345-LB	SB2-357-FS	N/A	N/A	S354S50AC
3300-Z22K	N/A	345-LB	SB2-357-FS	N/A	N/A	S354S50AC
3300-Z24	N/A	N/A	N/A	N/A	N/A	N/A
3300-Z24K	N/A	N/A	N/A	N/A	N/A	N/A
3300-N	1043-C	345-N	B344A/SN357	BH353A	EZ44TN	N/A
3300-NB	N/A	N/A	N/A	N/A	N/A	N/A
3300-NBK	N/A	N/A	N/A	N/A	N/A	N/A
3300-NK	1043-C	345-N	B344A/SN357	BH353A	EZ44TN	N/A
3300-SS	N/A	N/A	SS357	BH353S	EZ44TNZ	N/A
3300-SSB	N/A	N/A	N/A	N/A	N/A	N/A
3300-SSBK	N/A	N/A	N/A	N/A	N/A	N/A
3300-SSK	N/A	N/A	SS357	BH353S	EZ44TNZ	N/A
3300-Z2	N/A	N/A	SB357	N/A	N/A	N/A
3300-Z2B	N/A	N/A	N/A	N/A	N/A	N/A
3300-Z2BK	N/A	N/A	N/A	N/A	N/A	N/A
3300-Z2K	N/A	N/A	SB357	N/A	N/A	N/A
3300-Z4	N/A	N/A	N/A	N/A	N/A	N/A