

NEW
more on
reverse

Entrance Caps for Rigid, IMC, EMT and PVC

New Sizes and a Combo Style That Saves \$\$\$!



4"
PVC109
Includes
adapter sleeves
for 3-1/2"
and 3"
conduit

NEW!
SAVE \$\$\$

| Catalog Number | UPC/DEI/NAED Mfg. #018997 | Trade Size | Clamp-on Entrance Cap for Rigid, IMC, EMT, PVC |
|----------------|---------------------------|-------------|--|
| PVC106 | 12512 | 2-1/2 | |
| PVC109 | 12513 | 3, 3-1/2, 4 | Combo style w/ adapter sleeves for 3" and 3-1/2" |

See reverse for Arlington's complete line of entrance caps.

Whatever your entrance cap needs, Arlington has one that fits the bill.

We have two new sizes in our line of PVC Entrance Caps! In addition to the 1/2" to 2" trade sizes, we now offer a 2-1/2" cap and the **combo 3" • 3-1/2" • 4"**.

As for clamp-on styles, we offer 1/2" to 4" caps to fit rigid, EMT and PVC.

PVC109, our new **combo style** is the same size as a 3" to 4" metal entrance cap, but it costs the same as a 3" PVC cap. **It saves money and the hassle of stocking extra inventory**

because it works on three conduit sizes – 3", 3-1/2" and 4".

Priced as a 3", the (supplied) adapter sleeves allow the 4" size to fit a 3" or 3-1/2" conduit.



1 Stauffer Industrial Park
Scranton, PA 18517
800/233.4717
Fax 570/562.0646
www.aifittings.com

Entrance Caps for Rigid, IMC, EMT and PVC

Arlington has an Entrance Cap to fit your needs.

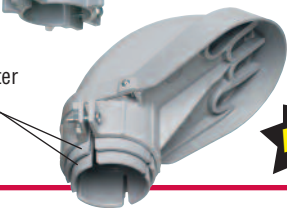
PVC100
thru
PVC104



PVC105
PVC106
PVC129



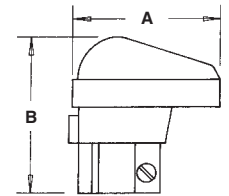
PVC109
w/ adapter
sleeves



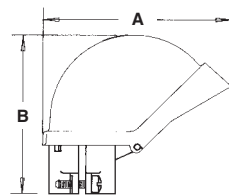
NEW!

PVC for rigid • IMC • EMT • Rigid PVC. 1/2" to 2" sizes include adapter sleeve for EMT.

| CATALOG NUMBER | UPC/DCI/NAED MFG #01 8997 | TRADE SIZE | STD PKG | DIM A | DIM B |
|----------------|---------------------------|--------------------|----------|---------------|--------------|
| PVC100 | 73100 | 1/2 | 25 | 2.625 | 2.900 |
| PVC101 | 73101 | 3/4 | 25 | 3.340 | 3.150 |
| PVC102 | 73102 | 1 | 20 | 3.340 | 3.360 |
| PVC103 | 73103 | 1-1/4 | 10 | 4.125 | 3.530 |
| PVC104 | 73104 | 1-1/2 | 10 | 4.145 | 3.530 |
| PVC105 | 73105 | 2 | 5 | 7.790 | 6.660 |
| PVC106 | 12512 | 2-1/2 | 1 | 9.790 | 7.620 |
| PVC109 | 12513 | 3, 3-1/2, 4 | 1 | 12.650 | 9.070 |
| PVC129 | 73129 | 2-1/2 Mast | 1 | 7.750 | 6.660 |

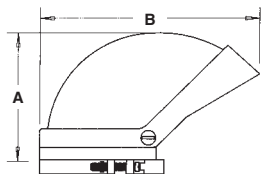


PVC100 - PVC104



PVC105 - PVC129

Clamp-on Style for rigid • IMC • EMT

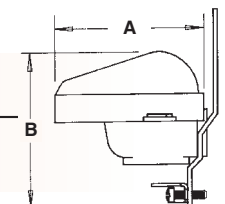


| CATALOG NUMBER | UPC/DCI/NAED MFG #01 8997 | TRADE SIZE | UNIT PKG | STD PKG | DIM A | DIM B | HOLE SIZES |
|----------------|---------------------------|------------|----------|---------|-------|-------|-----------------------|
| 140 | 00140 | 1/2 | 10 | 10 | 2.60 | 2.68 | (4).30 |
| 141 | 00141 | 3/4 | 10 | 10 | 2.72 | 3.80 | (2).38 (3).40 |
| 142 | 00142 | 1 | 10 | 10 | 3.11 | 3.32 | (2).44 (3).50 |
| 143 | 00143 | 1-1/4 | 5 | 25 | 3.20 | 4.46 | (2).42 (3).63 |
| 144 | 00144 | 1-1/2 | 3 | 15 | 4.34 | 4.85 | (2).60 (3).75 |
| 145 | 00145 | 2 | 10 | 10 | 4.55 | 6.62 | (2).75 (3)1.00 (1).53 |
| 146 | 00146 | 2-1/2 | 1 | 1 | 7.80 | 9.74 | (3)1.31 (3).87 (1).99 |
| 147 | 00147 | 3 | 1 | 1 | 8.00 | 10.50 | (3)1.31 (3).87 (1).99 |
| 148 | 00148 | 3-1/2 | 1 | 1 | 9.25 | 12.50 | (3)1.73 (4)1.10 |
| 149 | 00149 | 4 | 1 | 1 | 9.25 | 12.50 | (3)1.73 (4)1.10 |

PVC Entrance Caps with galvanized steel strap



| CATALOG NUMBER | UPC/DCI/NAED MFG #01 8997 | TRADE SIZE | STD PKG | DIM A | DIM B | HOLE SIZES |
|----------------|---------------------------|--------------------|---------|-------|-------|------------|
| PVC660 | 73660 | (3) 3, 6, 4, 2 | 50 | 2.700 | 2.520 | (2).53 |
| PVC662 | 73662 | (3) 1/0 to (3) 4/0 | 10 | 4.125 | 3.750 | (2).69 |



Arlington

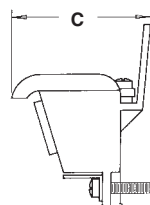
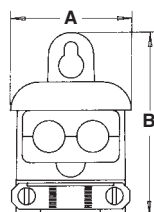
1 Stauffer Industrial Park
Scranton, PA 18517
800/233.4717
Fax 570/562.0646
www.aifittings.com

Service Entrance Cable Caps Zinc Diecast

| CATALOG NUMBER | UPC/DCI/NAED MFG #01 8997 | TRADE SIZE | STD PKG | DIM A | DIM B | DIM C | HOLE SIZES |
|----------------|---------------------------|----------------|---------|-------|-------|-------|------------|
| 660 | 00660 | 7/8" dia. max. | 50 | 2.060 | 2.970 | 2.260 | (2).58 |
| 662 | 00662 | 1/0 to 4/0 | 10 | 3.180 | 4.520 | 3.600 | (2).80 |



660



Distributed by

NEW
more on
reverse

Entrance Caps for Rigid, IMC, EMT and PVC

New Sizes and a Combo Style That Saves \$\$\$!



4"
PVC109
Includes
adapter sleeves
for 3-1/2"
and 3"
conduit

NEW!
SAVE \$\$\$

| Catalog Number | UPC/DEI/NAED Mfg. #018997 | Trade Size | Clamp-on Entrance Cap for Rigid, IMC, EMT, PVC |
|----------------|---------------------------|-------------|--|
| PVC106 | 12512 | 2-1/2 | |
| PVC109 | 12513 | 3, 3-1/2, 4 | Combo style w/ adapter sleeves for 3" and 3-1/2" |

See reverse for
Arlington's complete line
of entrance caps.

Whatever your entrance cap needs, Arlington has one that fits the bill.

We have two new sizes in our line of PVC Entrance Caps! In addition to the 1/2" to 2" trade sizes, we now offer a 2-1/2" cap and the **combo 3" • 3-1/2" • 4"**.

As for clamp-on styles, we offer 1/2" to 4" caps to fit rigid, EMT and PVC.

PVC109, our new **combo style** is the same size as a 3" to 4" metal entrance cap, but it costs the same as a 3" PVC cap. **It saves money and the hassle of stocking extra inventory**

because it works on three conduit sizes – 3", 3-1/2" and 4".

Priced as a 3", the (supplied) adapter sleeves allow the 4" size to fit a 3" or 3-1/2" conduit.



Arlington
1 Stauffer Industrial Park
Scranton, PA 18517
800/233.4717
Fax 570/562.0646
www.aifittings.com

Entrance Caps for Rigid, IMC, EMT and PVC

Arlington has an Entrance Cap to fit your needs.

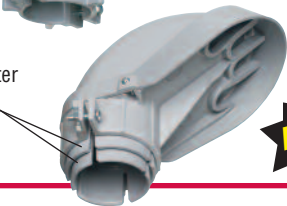
PVC100
thru
PVC104



PVC105
PVC106
PVC129



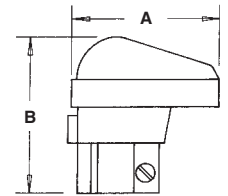
PVC109
w/ adapter
sleeves



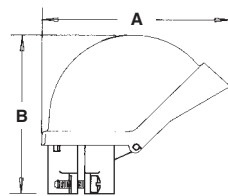
NEW!

PVC for rigid • IMC • EMT • Rigid PVC. 1/2" to 2" sizes include adapter sleeve for EMT.

| CATALOG NUMBER | UPC/DCI/NAED MFG #01 8997 | TRADE SIZE | STD PKG | DIM A | DIM B |
|----------------|---------------------------|--------------------|----------|---------------|--------------|
| PVC100 | 73100 | 1/2 | 25 | 2.625 | 2.900 |
| PVC101 | 73101 | 3/4 | 25 | 3.340 | 3.150 |
| PVC102 | 73102 | 1 | 20 | 3.340 | 3.360 |
| PVC103 | 73103 | 1-1/4 | 10 | 4.125 | 3.530 |
| PVC104 | 73104 | 1-1/2 | 10 | 4.145 | 3.530 |
| PVC105 | 73105 | 2 | 5 | 7.790 | 6.660 |
| PVC106 | 12512 | 2-1/2 | 1 | 9.790 | 7.620 |
| PVC109 | 12513 | 3, 3-1/2, 4 | 1 | 12.650 | 9.070 |
| PVC129 | 73129 | 2-1/2 Mast | 1 | 7.750 | 6.660 |

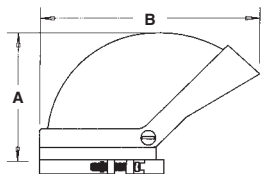


PVC100 - PVC104



PVC105 - PVC129

Clamp-on Style for rigid • IMC • EMT

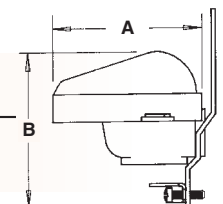


| CATALOG NUMBER | UPC/DCI/NAED MFG #01 8997 | TRADE SIZE | UNIT PKG | STD PKG | DIM A | DIM B | HOLE SIZES |
|----------------|---------------------------|------------|----------|---------|-------|-------|-----------------------|
| 140 | 00140 | 1/2 | 10 | 10 | 2.60 | 2.68 | (4).30 |
| 141 | 00141 | 3/4 | 10 | 10 | 2.72 | 3.80 | (2).38 (3).40 |
| 142 | 00142 | 1 | 10 | 10 | 3.11 | 3.32 | (2).44 (3).50 |
| 143 | 00143 | 1-1/4 | 5 | 25 | 3.20 | 4.46 | (2).42 (3).63 |
| 144 | 00144 | 1-1/2 | 3 | 15 | 4.34 | 4.85 | (2).60 (3).75 |
| 145 | 00145 | 2 | 10 | 10 | 4.55 | 6.62 | (2).75 (3)1.00 (1).53 |
| 146 | 00146 | 2-1/2 | 1 | 1 | 7.80 | 9.74 | (3)1.31 (3).87 (1).99 |
| 147 | 00147 | 3 | 1 | 1 | 8.00 | 10.50 | (3)1.31 (3).87 (1).99 |
| 148 | 00148 | 3-1/2 | 1 | 1 | 9.25 | 12.50 | (3)1.73 (4)1.10 |
| 149 | 00149 | 4 | 1 | 1 | 9.25 | 12.50 | (3)1.73 (4)1.10 |

PVC Entrance Caps with galvanized steel strap



| CATALOG NUMBER | UPC/DCI/NAED MFG #01 8997 | TRADE SIZE | STD PKG | DIM A | DIM B | HOLE SIZES |
|----------------|---------------------------|--------------------|---------|-------|-------|------------|
| PVC660 | 73660 | (3) 3, 6, 4, 2 | 50 | 2.700 | 2.520 | (2).53 |
| PVC662 | 73662 | (3) 1/0 to (3) 4/0 | 10 | 4.125 | 3.750 | (2).69 |



Arlington



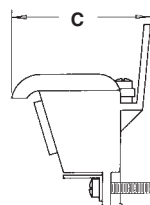
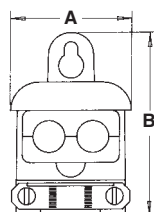
1 Stauffer Industrial Park
Scranton, PA 18517
800/233.4717
Fax 570/562.0646
www.aifittings.com

Service Entrance Cable Caps Zinc Diecast

| CATALOG NUMBER | UPC/DCI/NAED MFG #01 8997 | TRADE SIZE | STD PKG | DIM A | DIM B | DIM C | HOLE SIZES |
|----------------|---------------------------|----------------|---------|-------|-------|-------|------------|
| 660 | 00660 | 7/8" dia. max. | 50 | 2.060 | 2.970 | 2.260 | (2).58 |
| 662 | 00662 | 1/0 to 4/0 | 10 | 3.180 | 4.520 | 3.600 | (2).80 |



660



Distributed by