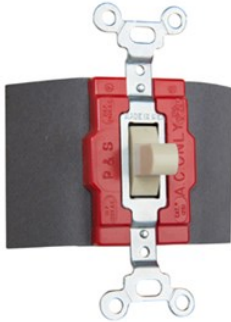

MANUAL CONTROLLER

12511 | [Pass & Seymour](#)



FEATURES & BENEFITS

Single Pole, Double Throw Manual Control Switch, 20 amps, 120/277 volts, Ivory.



- Oversize silver alloy contacts for long life and better heat dissipation.
- Side wired terminals accept #14 - #10 AWG copper or copper-clad conductors.
- Fiber terminal insulation barriers standard.
- Can be mounted in standard device boxes or in NEMA 1 sheet steel enclosures.
- Bodies, covers, and toggles molded of durable nylon.
- Single Pole-Double Throw and Double Pole-Double Throw.
- Locking Switches supplied with one 1498-NT key.
- Normally open.
- For covering patents, see www.legrand.us/patents.

SPECIFICATIONS

GENERAL INFO

Color: Ivory

Type: Momentary Contact

Number Of Poles: 1

Special Features: Three Position

LISTING AGENCIES/THIRD PARTY CERTIFICATIONS

RoHS: Yes

CSA Listing Info: Yes

UL Listing No: Yes

UN SPSC: 39121507

DIMENSIONS

Depth (US): 1.469"
Height (US): 3.281"
Width (US): 1.5"
Weight: 0.26504

TECHNICAL INFORMATION

Amps: 20A
Volts: 120/277VAC
Volts (AC): 120/277

BUY AMERICAN ACT COMPLIANCE

Country Of Origin: MEXICO
Buy American Act Status: Trade Agreement Act Compliant

