

CSA, ULI

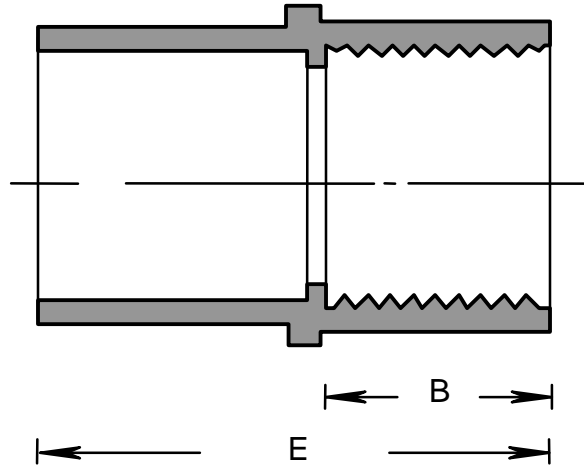
RIGID PVC CONDUIT FITTINGS - KRALOY

FEMALE ADAPTER

ISSUE DATE:
DATE D'EMISSION: 2007 08 30

SUPERCEDES:
REPLACE: 2006 08 30

5



| PRODUCT CODE | PART NUMBER | NOMINAL SIZE | | E | | B | |
|--------------|-------------|--------------|------|-------|------|-------|------|
| | | (in) | (mm) | (in) | (mm) | (in) | (mm) |
| 078070 | FA05 | 1/2 | 16 | 1.400 | 36 | 0.700 | 18 |
| 078071 | FA07 | 3/4 | 21 | 1.550 | 39 | 0.765 | 19 |
| 078072 | FA10 | 1 | 27 | 2.000 | 51 | 1.000 | 25 |
| 078073 | FA12 | 1 1/4 | 35 | 2.065 | 52 | 1.000 | 25 |
| 078074 | FA15 | 1 1/2 | 41 | 2.185 | 55 | 1.000 | 25 |
| 078075 | FA20 | 2 | 53 | 2.260 | 57 | 1.000 | 25 |
| 078076 | FA25 | 2 1/2 | 63 | 2.290 | 58 | 1.000 | 25 |
| 078077 | FA30 | 3 | 78 | 2.950 | 75 | 1.145 | 29 |
| 078078 | FA35 | 3 1/2 | 91 | 4.100 | 104 | 1.800 | 46 |
| 078079 | FA40 | 4 | 103 | 3.120 | 79 | 1.150 | 29 |
| 078080 | FA50 | 5 | 129 | 3.750 | 95 | 1.520 | 39 |
| 078081 | FA60 | 6 | 155 | 4.062 | 103 | 1.500 | 38 |
| 178035* | FA12 | 1 1/4 | 35 | 2.065 | 52 | 1.000 | 25 |
| 178037* | FA20 | 2 | 53 | 2.260 | 57 | 1.000 | 25 |
| 178145* | FA25 | 2 1/2 | 63 | 2.290 | 58 | 1.000 | 25 |

NPT TAPPED THREAD FOR ALL FEMALE ADAPTERS

* For Pacific Circle

CSA, ULI

RIGID PVC CONDUIT FITTINGS - KRALOY

FEMALE ADAPTER

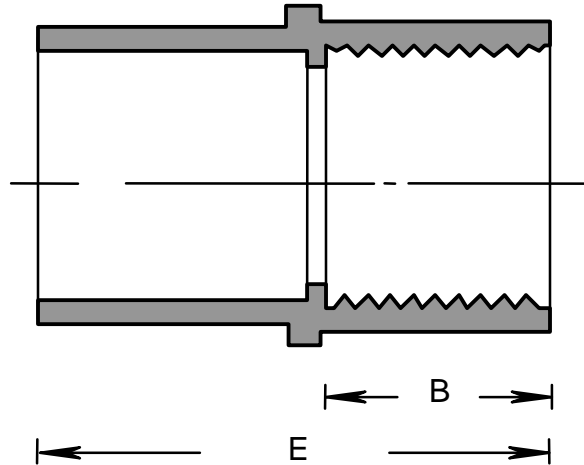
ISSUE DATE:

DATE D'EMISSION: 2007 08 30

SUPERCEDES:

REPLACE: 2006 08 30

5



| PRODUCT CODE | PART NUMBER | NOMINAL SIZE | | E | | B | |
|--------------|-------------|--------------|------|-------|------|-------|------|
| | | (in) | (mm) | (in) | (mm) | (in) | (mm) |
| 078070 | FA05 | 1/2 | 16 | 1.400 | 36 | 0.700 | 18 |
| 078071 | FA07 | 3/4 | 21 | 1.550 | 39 | 0.765 | 19 |
| 078072 | FA10 | 1 | 27 | 2.000 | 51 | 1.000 | 25 |
| 078073 | FA12 | 1 1/4 | 35 | 2.065 | 52 | 1.000 | 25 |
| 078074 | FA15 | 1 1/2 | 41 | 2.185 | 55 | 1.000 | 25 |
| 078075 | FA20 | 2 | 53 | 2.260 | 57 | 1.000 | 25 |
| 078076 | FA25 | 2 1/2 | 63 | 2.290 | 58 | 1.000 | 25 |
| 078077 | FA30 | 3 | 78 | 2.950 | 75 | 1.145 | 29 |
| 078078 | FA35 | 3 1/2 | 91 | 4.100 | 104 | 1.800 | 46 |
| 078079 | FA40 | 4 | 103 | 3.120 | 79 | 1.150 | 29 |
| 078080 | FA50 | 5 | 129 | 3.750 | 95 | 1.520 | 39 |
| 078081 | FA60 | 6 | 155 | 4.062 | 103 | 1.500 | 38 |
| 178035* | FA12 | 1 1/4 | 35 | 2.065 | 52 | 1.000 | 25 |
| 178037* | FA20 | 2 | 53 | 2.260 | 57 | 1.000 | 25 |
| 178145* | FA25 | 2 1/2 | 63 | 2.290 | 58 | 1.000 | 25 |

NPT TAPPED THREAD FOR ALL FEMALE ADAPTERS

* For Pacific Circle