


 Site Search: >> Select Language:
[Home](#) [About Us](#) [Products](#) [Price Lists](#) [Library](#) [ERICO Partners](#) [Software & Downloads](#) [Contact Us](#)
[Home](#) : [Products](#) : [CADDY® Fasteners - Electrical](#) : [Stud Wall](#) : CADDY® Box To Stud Hanger


CADDY® Box To Stud Hanger


[Where to buy](#) [Printer](#)

ERICO offers the CADDY® Box to Stud Hanger.

Product Available In:

North America
Latin America

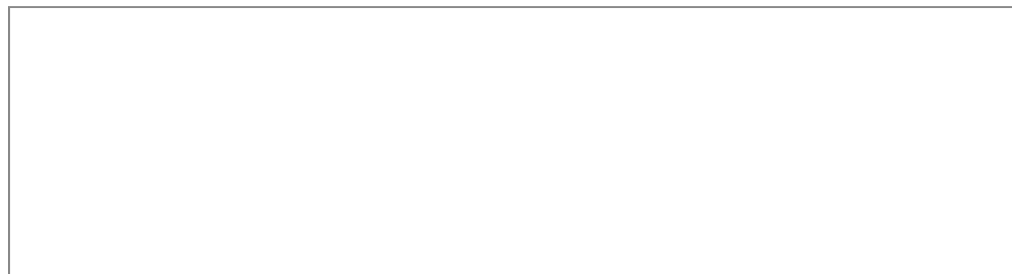
Features

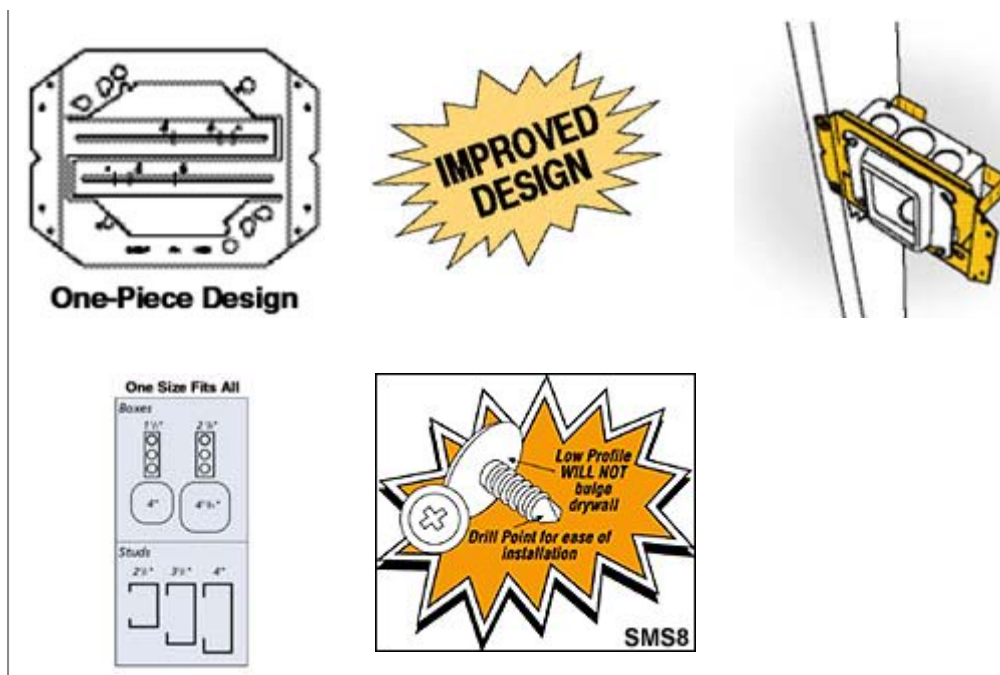
- **Improved Design – Now with built-in far side supports – improves access to the electrical box and eliminates the need to attach a separate tab for support**
- One bracket works for:
 - Two box depths (1-1/2" or 2-1/8" deep)
 - Two box sizes (4" or 4-11/16" sq.)
 - Three wall stud depths (2-1/2", 3-1/2", & 4" studs)
- All-in-one design simplifies handling, reduces inventory and saves space
- Requires only a screw gun to install
- V-notched on center allowing for consistent positioning
- Built-in support leg eliminates box movement when used with EMT and is ideal for flexible conduit, ENT, MC, AC or Romex® non-metallic sheathed cable
- Offset design of MEB1 and use of CADDY #SMS8 low profile self-tapping screws (included) eliminates drywall bulge
- Can be pre-assembled in the shop to allow for greater efficiency at the job site
- Plaster rings can be mounted separately eliminating the need for an electrical box
- low-voltage applications
- MP Series brackets can be attached in-line to the MEB1 for low voltage applications

Applications

Accommodates various box sizes and depths, as well as stud depths, for most applications to stud.

More Information





| Part No. | Description | Std Box Qty |
|----------|--------------------|-------------|
| MEB1 | Box to stud hanger | 50 |

Copyright © 2006 ERICO International Corporation. [Privacy and Legal Statements](#) · [Top of Page](#)